

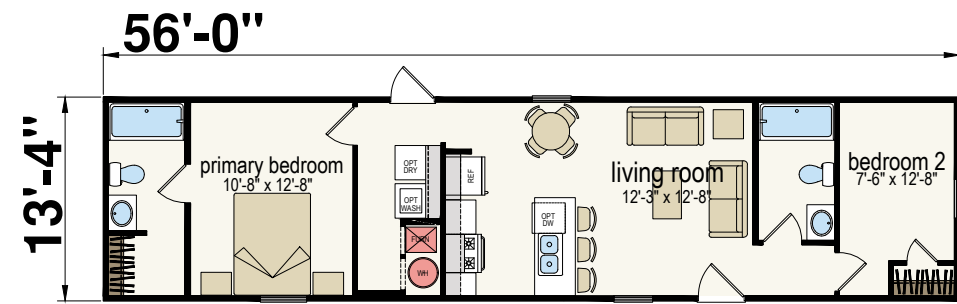


Pinnacle  
Floor plan on pg. 22

## Peak

Alternate Option Available: 1456H22P02 - Peake Reverse Aisle

Two Bed | Two Bath | 747 sq. Ft.



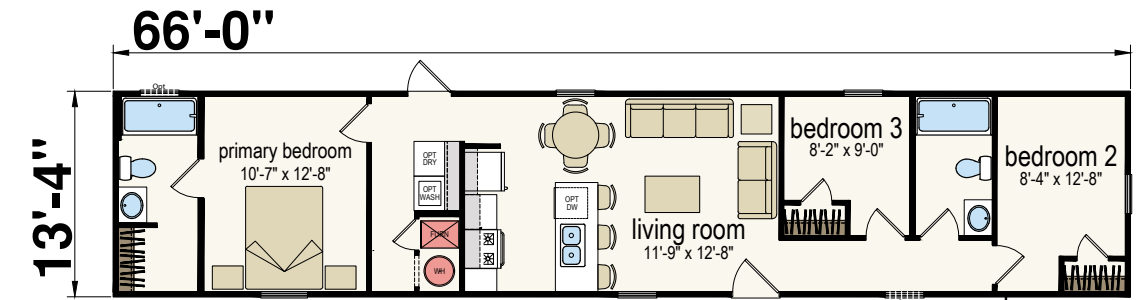
1456H22P01



## Zenith

Alternate Option Available: 1466H32P01 - Zenith Reverse Aisle

Three Bed | Two Bath | 880 sq. Ft.

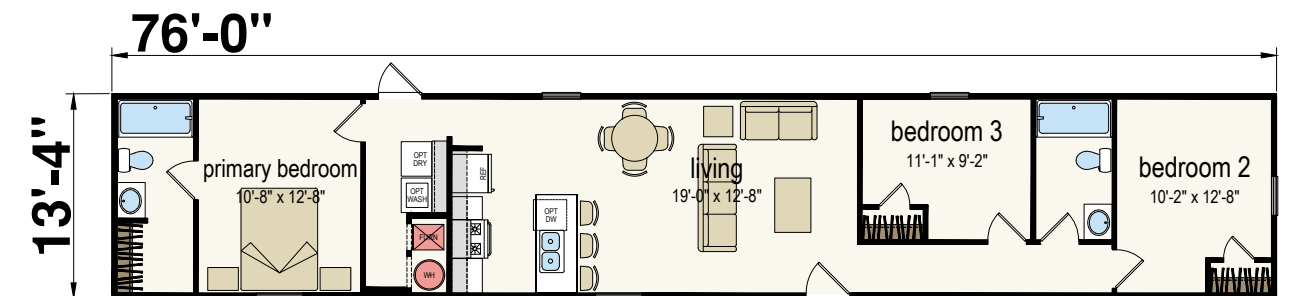


1466H32P01

## Summit

Alternate Option Available: 1476H32P02 - Summit Reverse Aisle

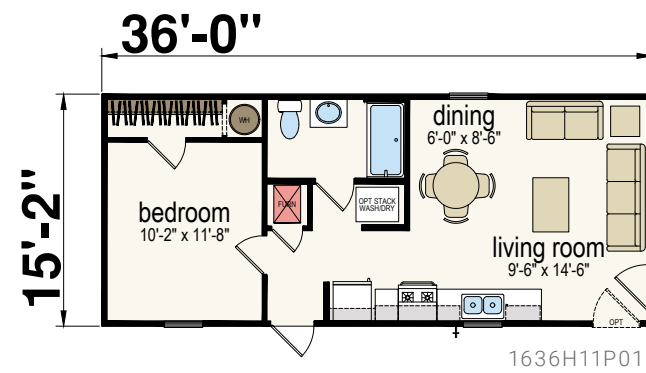
Three Bed | Two Bath | 1,013 sq. Ft.



1476H32P01

## Pike

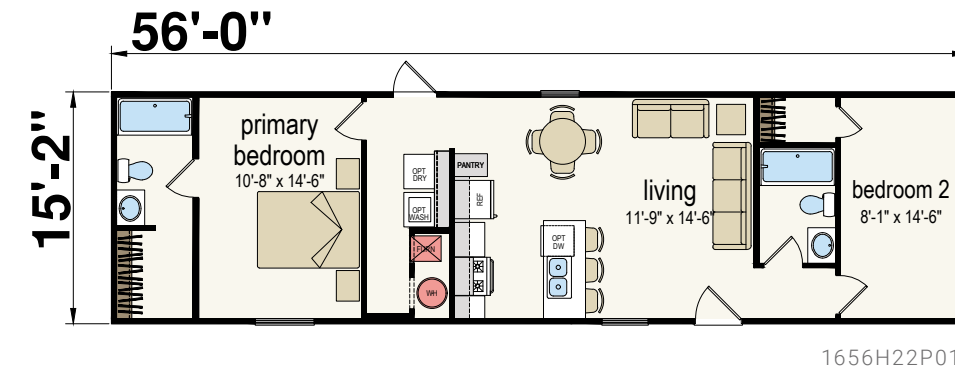
One Bed | One Bath | 546 Sq. Ft.



## Barkley

Alternate Option Available: 1656H22P02 - Barkley Reverse Aisle

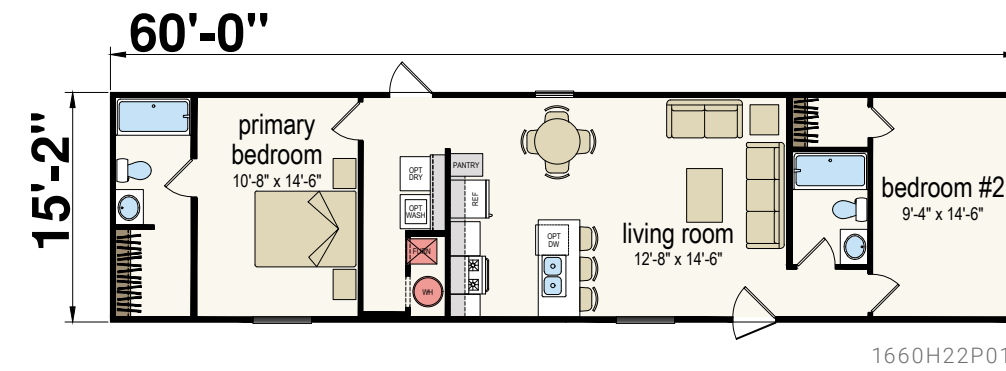
Two Bed | Two Bath | 849 Sq. Ft.



## Spire

Alternate Option Available: 1660H22P02 - Spire Reverse Aisle

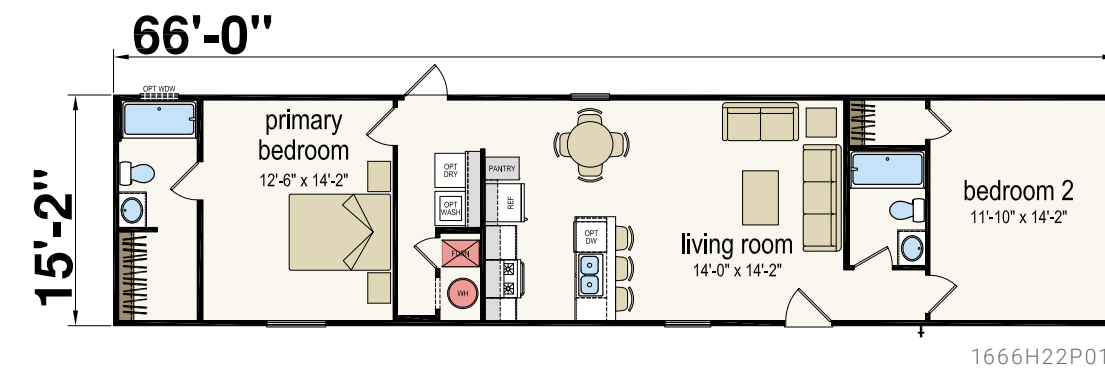
Two Bed | Two Bath | 910 Sq. Ft.



## Edmonson

Alternate Option Available: 1666H22P02 - Edmonson Reverse Aisle

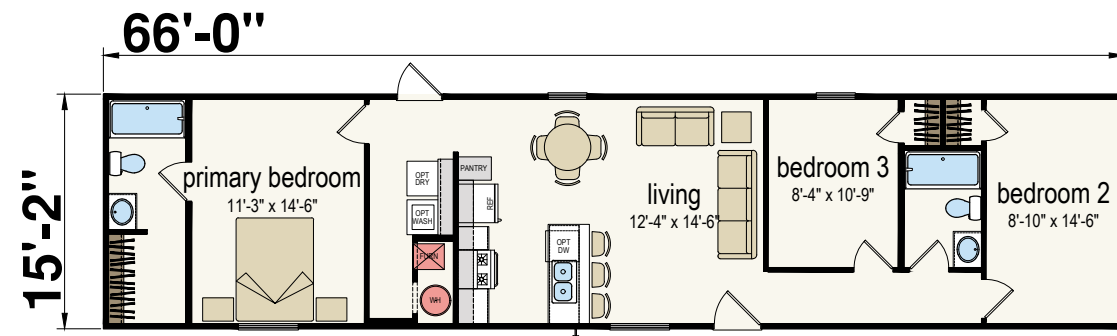
Two Bed | Two Bath | 1,001 Sq. Ft.



## Vertex

Alternate Option Available: 1666H32P02 - Vertex Reverse Aisle

Three Bed | Two Bath | 1,001 sq. Ft.

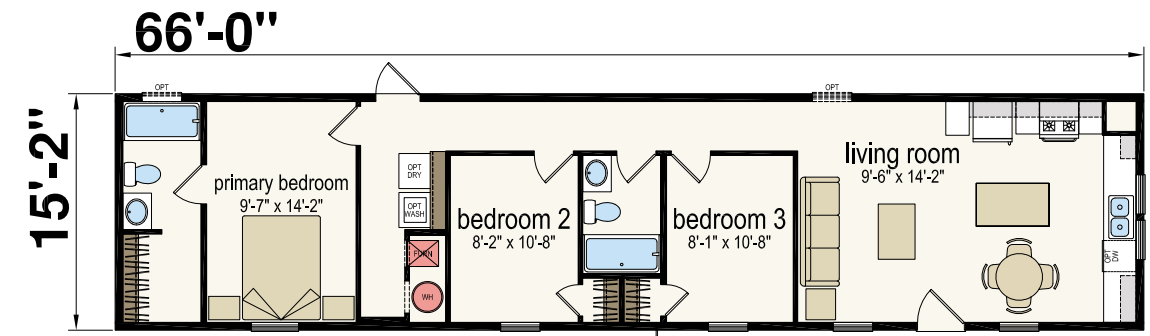


1666H32P01



## Hickman

Three Bed | Two Bath | 1,092 sq. Ft.

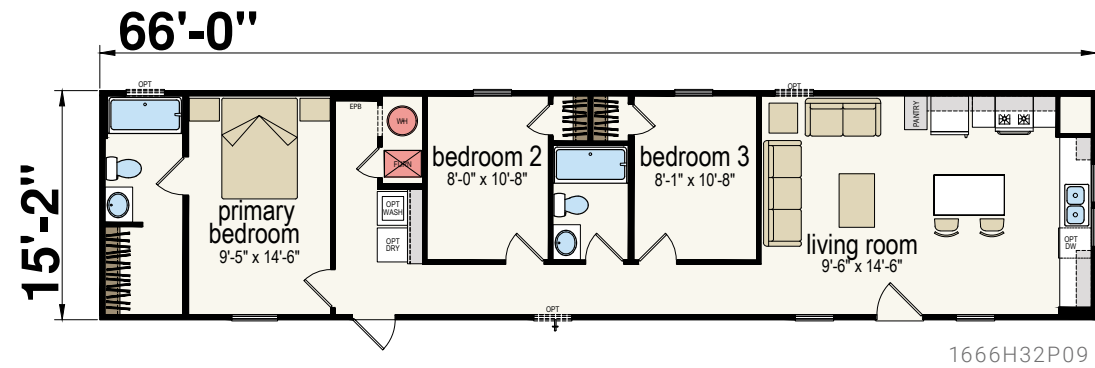


1666H32P07



## Pendleton

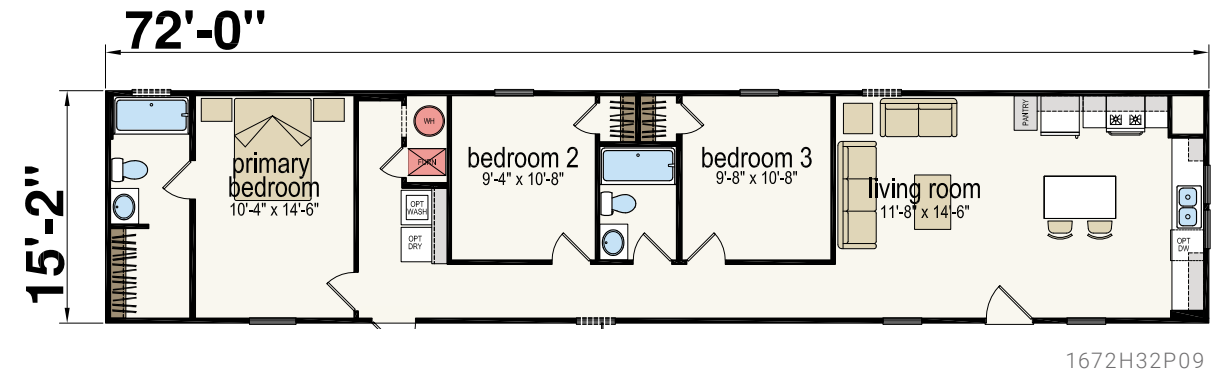
Three Bed | Two Bath | 1,000 sq. Ft.



1666H32P09

## Powell

Three Bed | Two Bath | 1,092 sq. Ft.

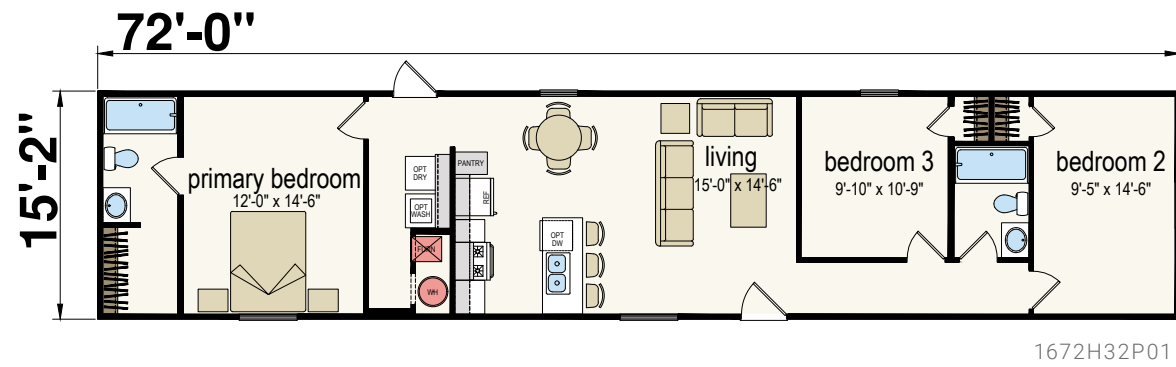


1672H32P09

## Bardtown

Alternate Option Available: 1676H32P02 - Bardstown Reverse Aisle

Three Bed | Two Bath | 1,092 sq. Ft.

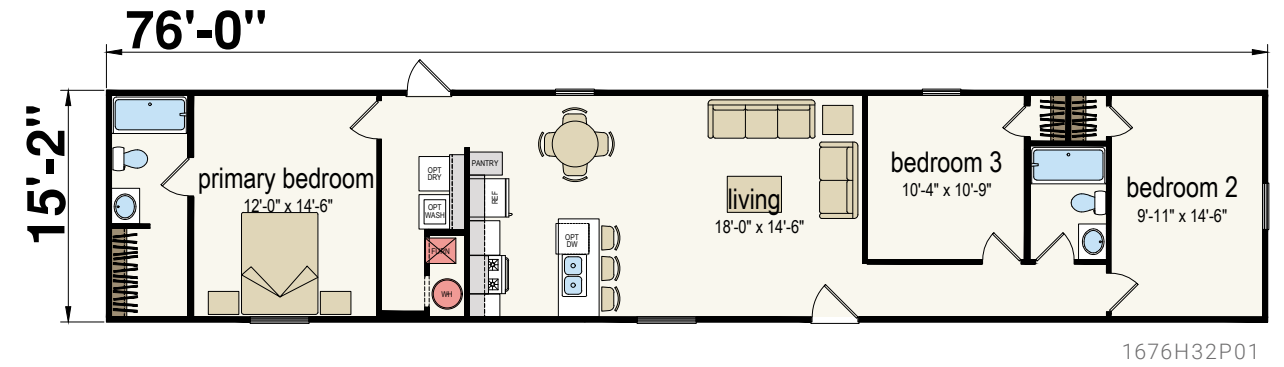


1672H32P01

## Ridge

Alternate Option Available: 1676H32P02 - Ridge Reverse Aisle

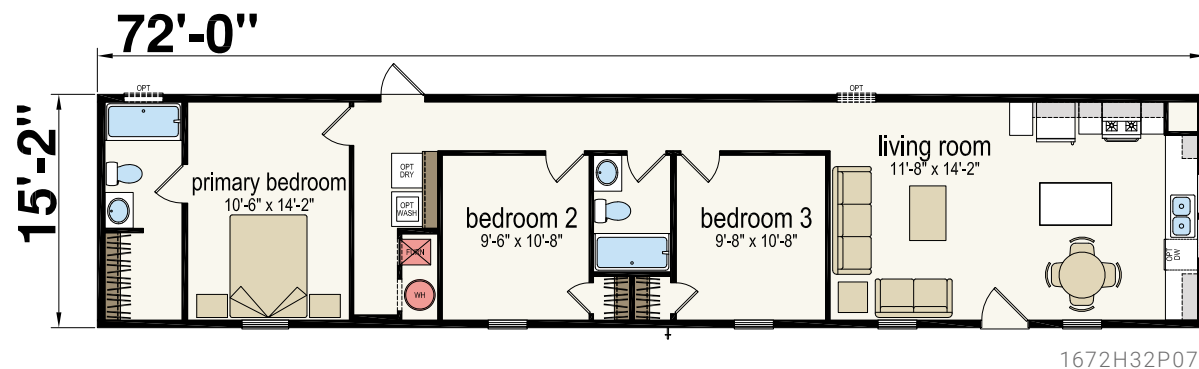
Three Bed | Two Bath | 1,152 sq. Ft.



1676H32P01

## Ballard

Three Bed | Two Bath | 1,092 sq. Ft.

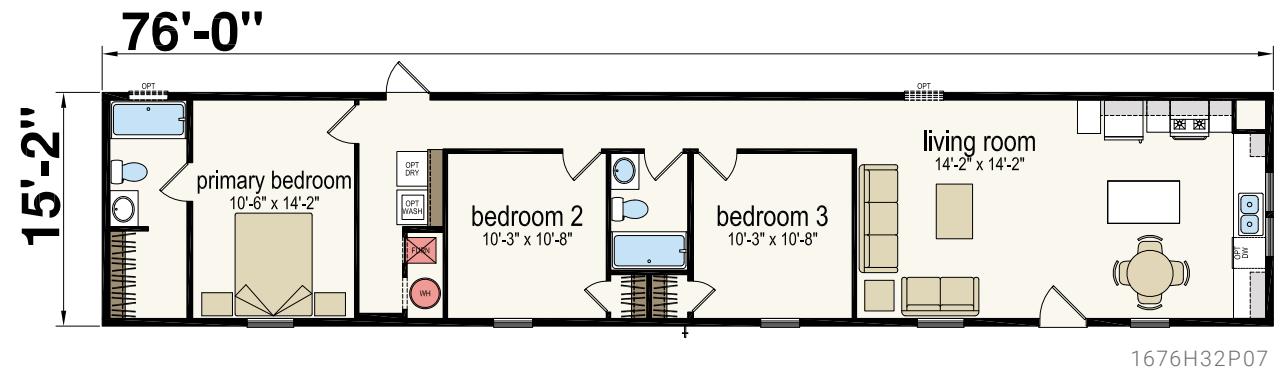


1672H32P07



## Somerset

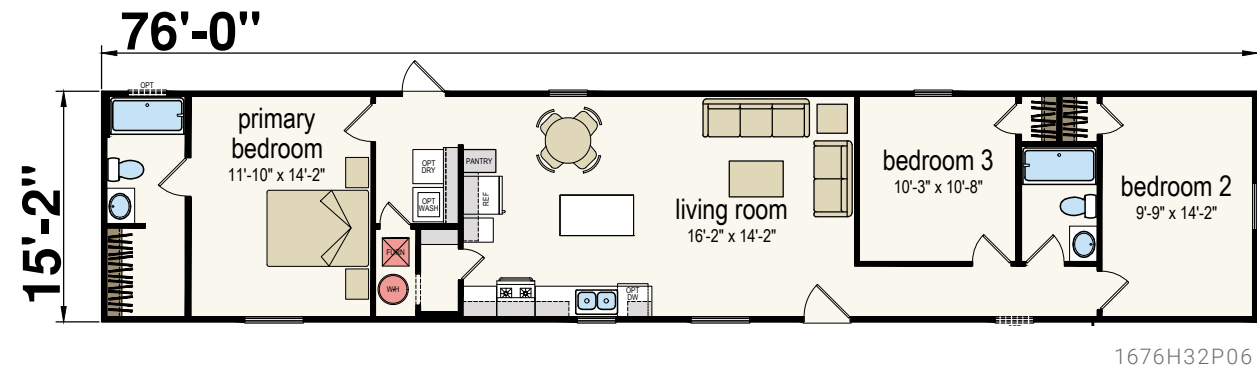
Three Bed | Two Bath | 1,152 sq. Ft.



## Monte

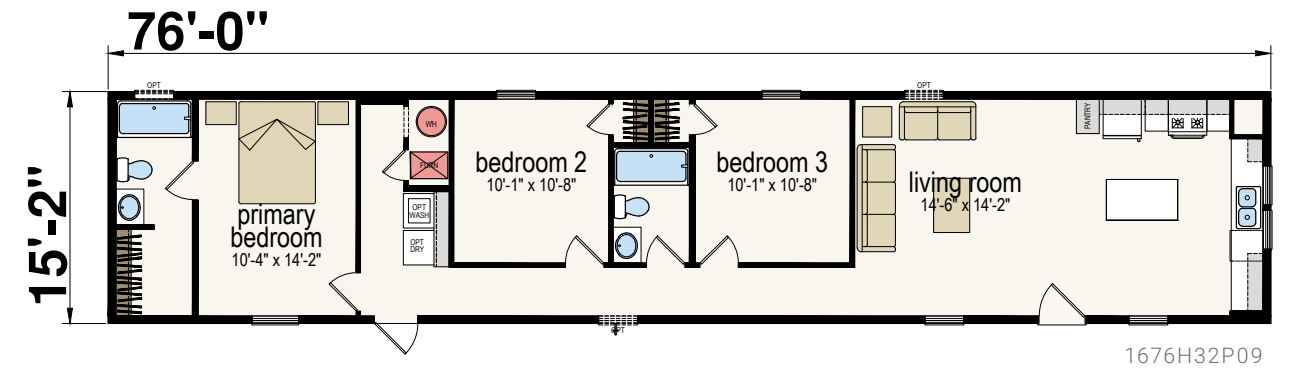
Three Bed | Two Bath | 1,152 sq. Ft.

Alternate Option Available: 1676H32P05- Monte Reverse Aisle



## Floyd

Three Bed | Two Bath | 1,152 sq. Ft.



## Decor Options

# PRIME®

### INTERIOR

#### Walls



Sketch Prime

#### Cabinets



Chai Oak Shaker Door



Arctic White Shaker Door

#### Vinyl Flooring



AF020 Aged European Oak Natural

#### Countertops



White Carrara



Roca Bosca

### EXTERIOR

#### Shutters



Clay

Wine

Blue

White

Black

#### Shingles

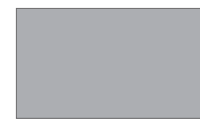


Black

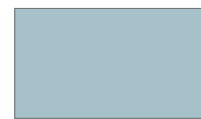
#### Vinyl Siding



Cypress



Flint



Blue



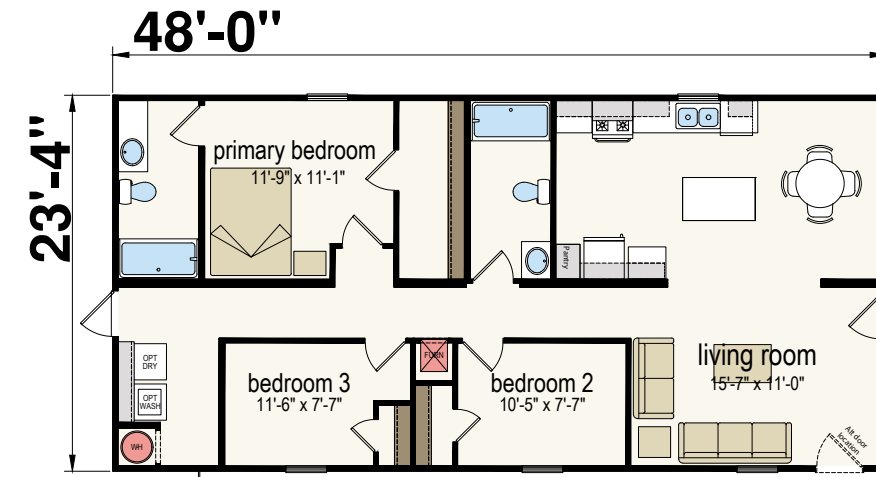
Clay



White

## Plateau

Three Bed | Two Bath | 1,120 sq. Ft.

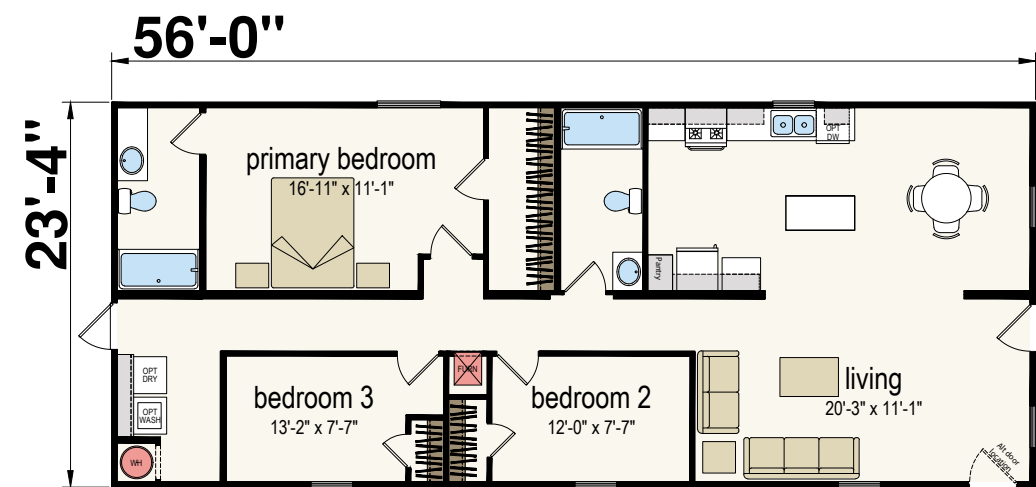


2448H32P02

Three Bed | Two Bath | 1,306 sq. Ft.

## Horizon

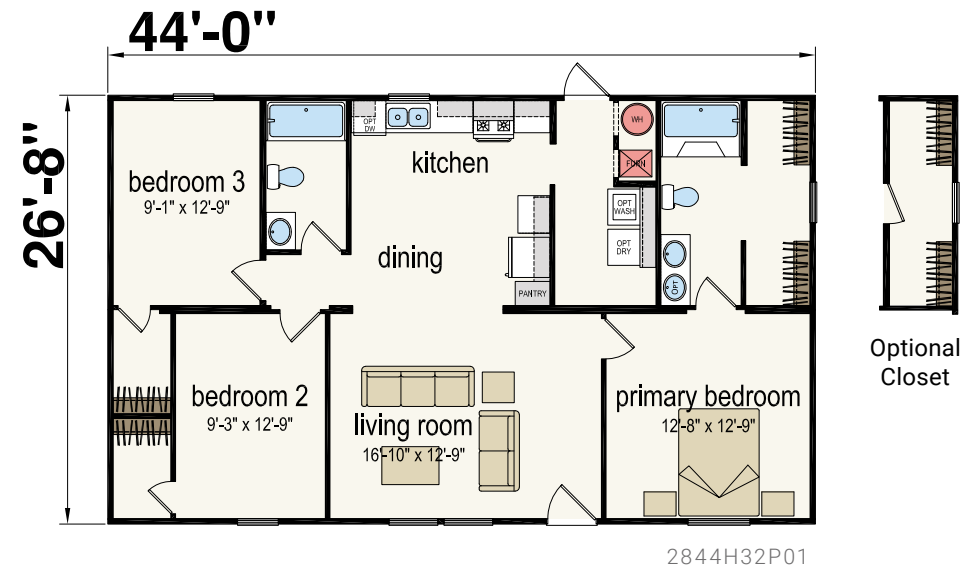
Three Bed | Two Bath | 1,306 Sq. Ft.



2456H32P02

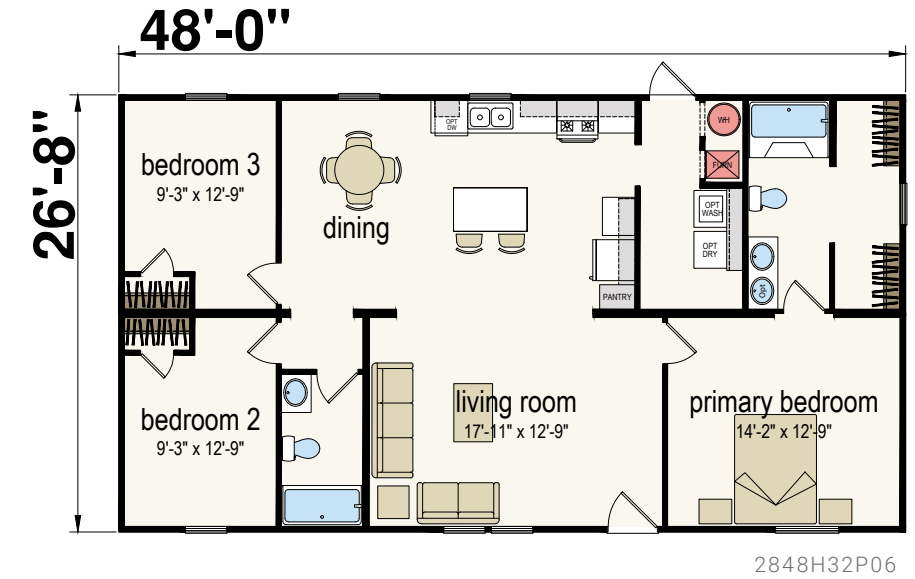
## Estill

Three Bed | Two Bath | 1,173 sq. Ft.



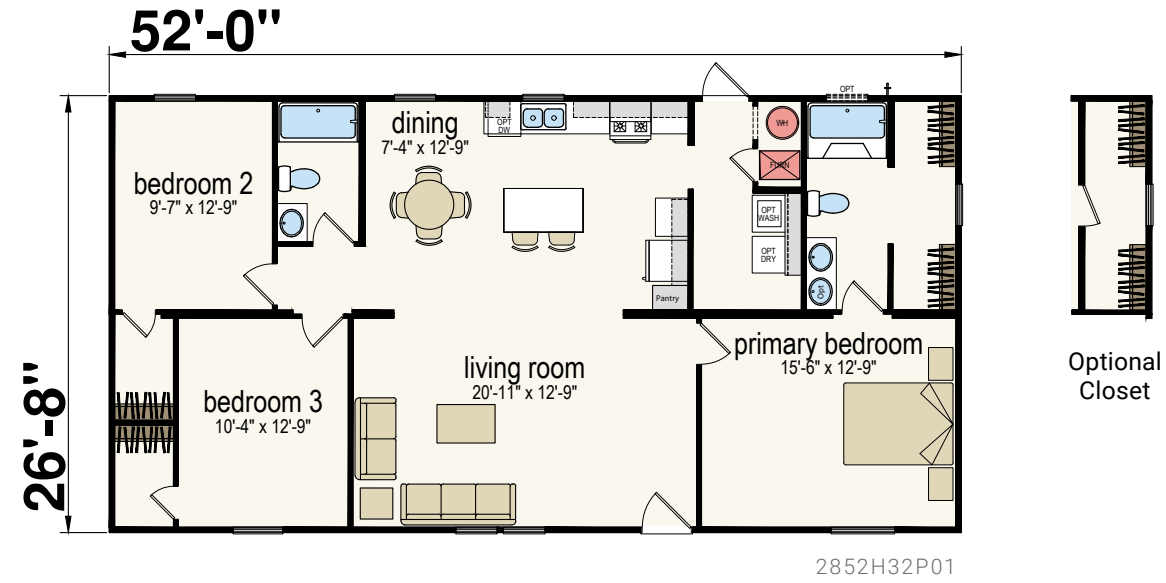
## Churchill

Three Bed | Two Bath | 1,280 sq. Ft.



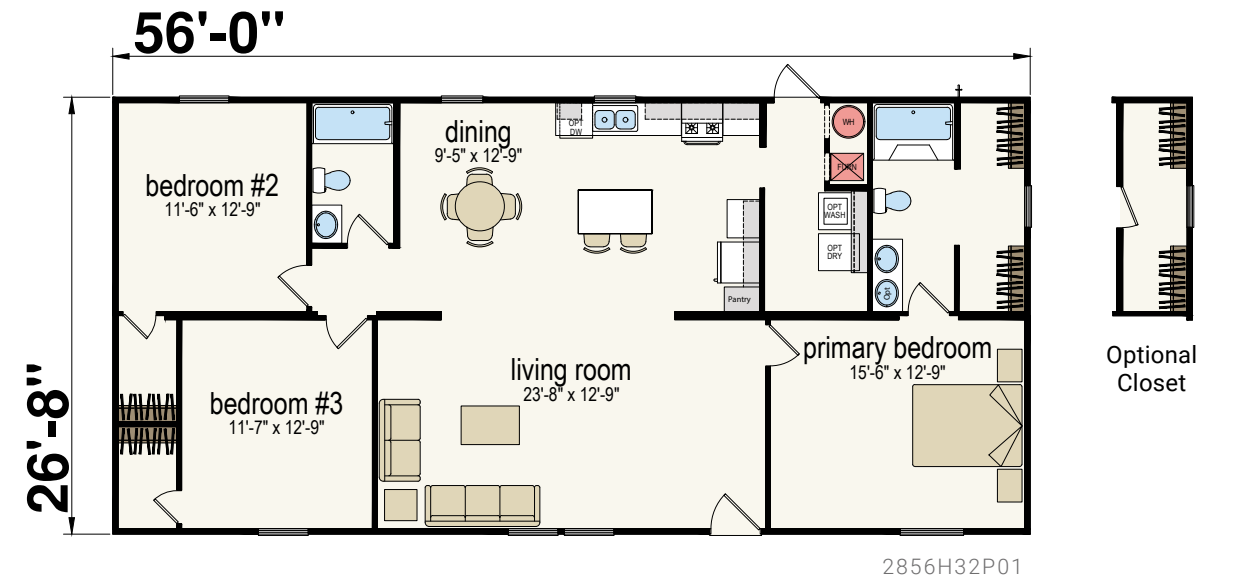
## Mercer

Three Bed | Two Bath | 1,387 Sq. Ft.



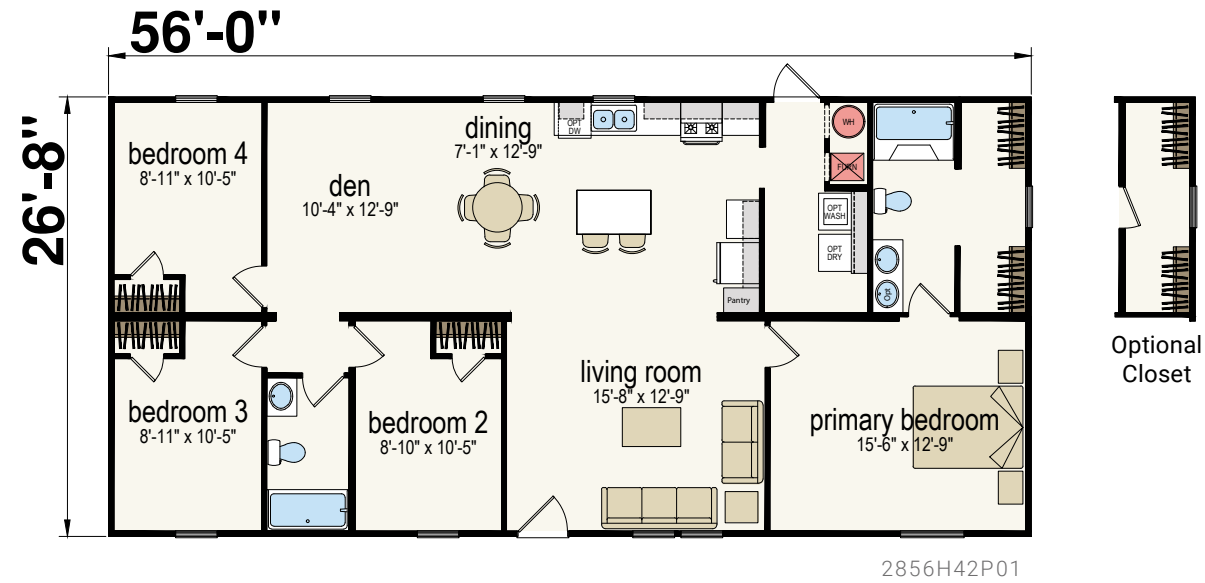
## Apex

Three Bed | Two Bath | 1,493 Sq. Ft.



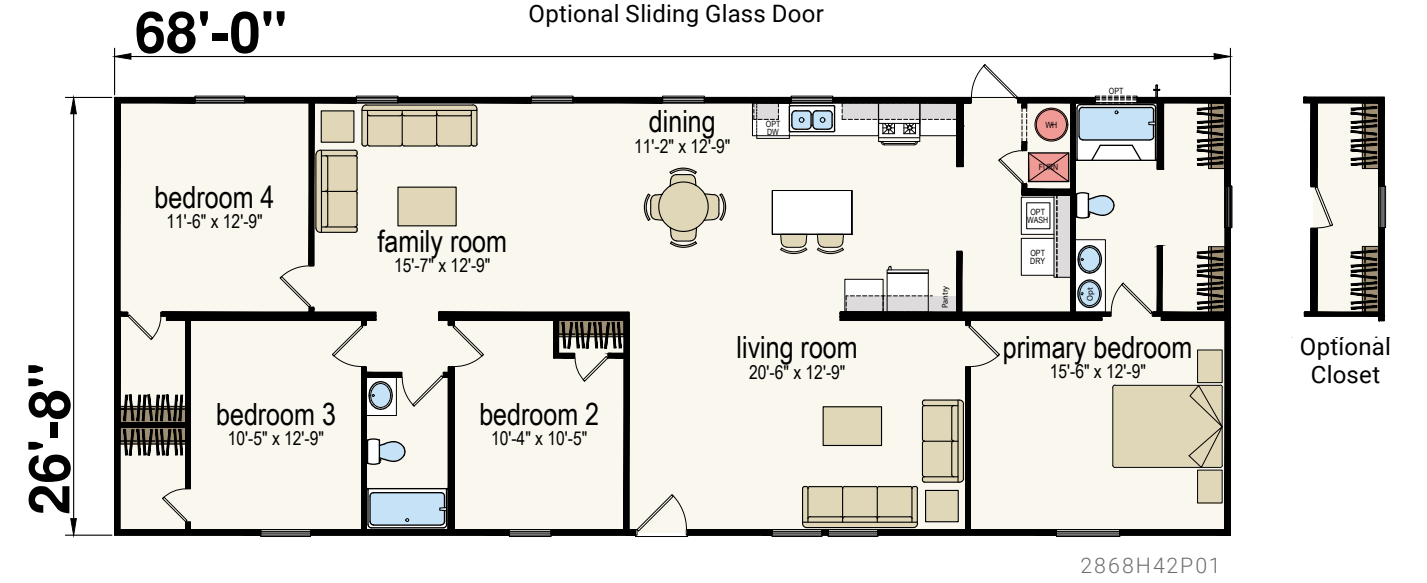
## Richmond

Four Bed | Two Bath | 1,493 sq. Ft.



## The Grand

Four Bed | Two Bath | 1,813 sq. Ft.

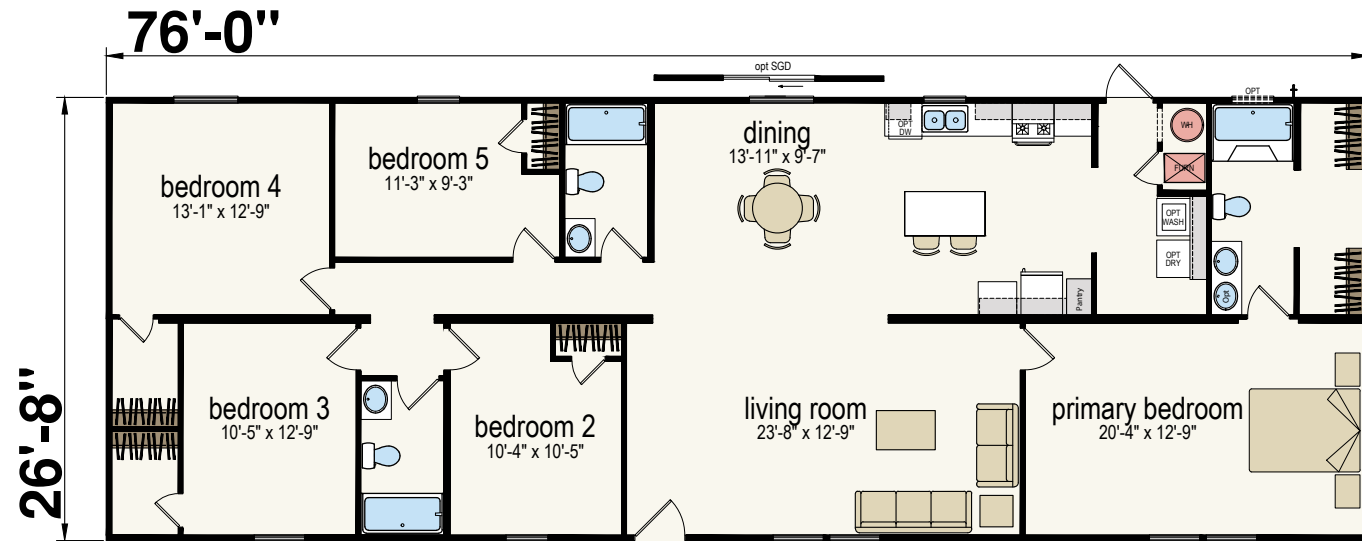


**The Grand** | Interior Photos



## Pinnacle

Five Bed | Three Bath | 2,027 Sq. Ft.



2876H53P01



## Standard Features

**Bolded** features are part of the PRIME PLUS Package.

### Construction

- Recessed Frame
- Detachable Hitch
- 48" O.C. Outriggers
- 2x6 Exterior Sidewalls - 16" O.C.
- 2x8 Floor Joist - 16" O.C. on 16' Wide
- 2x6 Floor Joist - 16" O.C. on 14' Wide
- R-19 Sidewall Insulation
- R-11 Floor Insulation
- R-28 Roof Insulation
- 7/16" OSB Roof Sheathing
- 30lb PSF Roof Load
- 19/32" OSB Floor Decking
- 8' Sidewall w/ Full Stomped Flat Ceiling

### Exterior

- 3-Tab Shingle (Black)
- Shutters (Door Side & Hitch End)
- Vinyl Low-E Windows (No Grids)
- White Corner Posts
- **6-Panel Residential Front & Rear Door**
- **Upgraded Ice Dam Protection**

### Interior

- **60" Fiberglass Shower in Primary Bath**
- **Fiberglass Tub/Shower in Second Bath**
- Porcelain Lavs
- **Metal Faucets Throughout**
- **4" Laminate Backsplash Throughout**
- **Shaker MDF Cabinet w/ Full Overlay**
- **Adjustable Center Shelves in Overhead**
- Main Panel VOG Throughout

- Factory Select Linoleum Throughout
- 7" Stainless Steel Sink
- Vanity Mirror in Both Baths
- Laminate Countertops
- 30" Overhead Cabinets w/ Adjustable Shelves
- Shelf Over Refrigerator
- Lined Cabinets - Overhead Only
- 3/4" MDF Stiles
- 4-Drawer Bank in Kitchen
- **Round Cabinet Knobs**
- 30" White 2-Panel Interior Doors
- Washer/Dryer Shelf

### Plumbing / Heating

- Carrier Electric Furnace
- 30-Gallon Electric Water Heater
- Whole House Shut Off
- Exterior Faucet
- In-line Heat
- **Furnace Door**

### Electrical

- 200 AMP Service
- **6" Can Lights Throughout**
- Exterior Receptacle
- Exterior Lights at Both Doors

### Appliances

- Electric Range - Black
- 18 Cu.Ft. Refrigerator - Black
- **30" Vertical Vent Range Hood Vented Through Roof**



Due to continuous product development and improvement, prices, specifications, and materials are subject to change without notice or obligation. Square footage and other dimensions are approximate. Exterior images may be artist renderings and are not intended to be an accurate representation of the home. Renderings, photos and floor plans may be shown with optional features or third-party additions.



*Check out  
floor plans  
near you!*



**CHAMPION<sup>®</sup>**  
**HOMES**

1418 S. 13th St. | Decatur, IN 46733